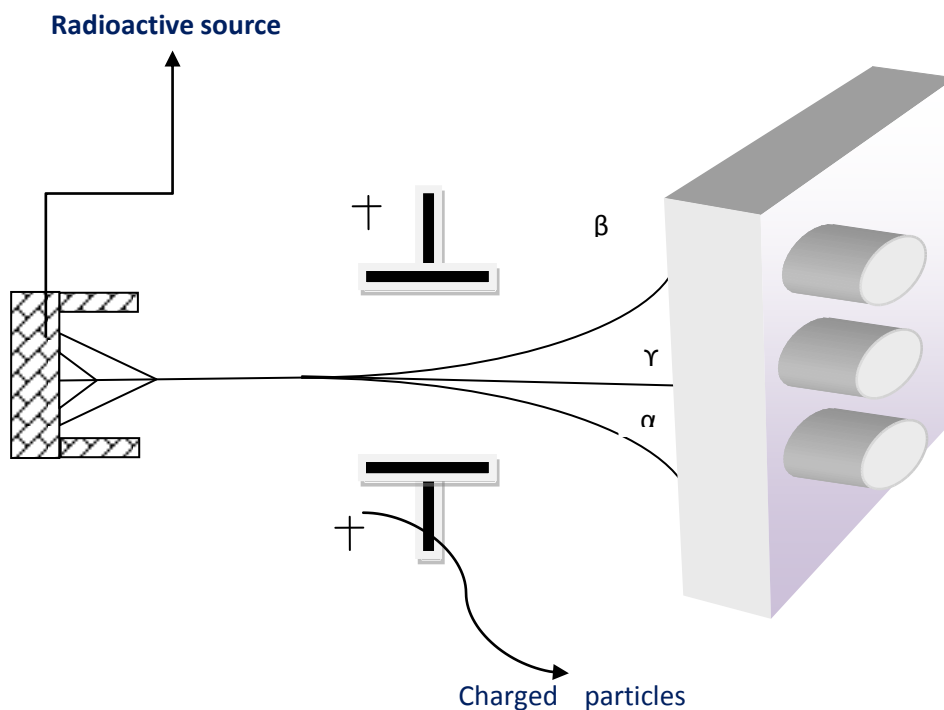


Radioactivity

Some of the nuclear atoms configuration are weak and less stable than the others. Such atoms nucleus disintegrate to form more strong stable nucleus arrangements . These less stable nucleus decay by splitting out mass the alpha particles . the charge beta particles and energy the gamma particles.

Highest atomic weight bearing elements like thorium, polonium, radium, ionium, actinium and uranium are possessing such weak configuration with unstable isotopes. Hence they undergo spontaneous change into isotopes of other elements with high velocity particles emission. This is referred as radio active charge.

After undergoing many such disintegration at many stages atomic structure with stable nucleus is formed . This type of forming in nucleus arrangements takes place in heavy elements spontaneously by the emission of powerful radiations. This phenomenon of unstable element is called Radiation or the Radioactivity of the Element. The substance that emits radiation are called radioactive substance.



Radioactivity